

Pictures of Maple Shade

Copyright © 2021, 2023, 2024 Dennis Lee Weaver

In behalf of the Maple Shade Historical Society

All rights reserved.

I thank all who contributed photos to the
Maple Shade Historical Society and to this book.

-Dennis Lee Weaver

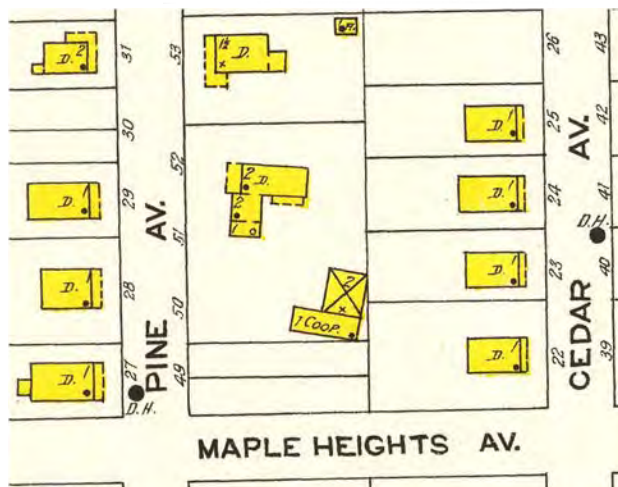


Coles Roberts beside the original Roberts Monument plaque



The Maple Shade Boy Scouts and Coles Roberts in front of the Roberts Monument on East Main St.

The Roberts family was one of the first three pioneer families to settle in what is today, Maple Shade, N.J. The Roberts, Matlack and Hancock families had their lands surveyed on November 14, 1682.



The Roberts/ Lippincott/ Mason farmhouse

When you are on East Main Street, you realize that the peak of the hill is Pine Avenue, but actually the top of the hill is down South Pine Avenue where this house once stood.

1923 Sanborn map detail showing house



Samuel Roberts/ Alfred Rudderow house which was on Mill Road

In the early 1800s the Roberts family had a saw mill near to where Route 38 and Mill Road meet.

According to T. Chalkley Matlack, Samuel Roberts built this house and moved there in 1861 from the older house which was near the mill.

The house was razed for a parking lot for Maude Wilkins School.



Charles Haines' house, originally the Jeremiah Matlack house

Now the site of Fox Meadows Apartments. It last served as a clubhouse for the Spring Hill Golf Course.

Photo- T. Chalkley Matlack



Matlack Blacksmith Shop.

It was on the Lindley Gardiner farm and razed in 1967 for Maplewood Apartments.



William Matlack the 3rd house.

It was built by a grandson of William the pioneer. The accepted date of its construction is 1751. Later it was the George Matlack home.

It is now on Dead End Drive.

The Roberts, Matlack and Hancock families were followed by the Clark, Rudderow and Stiles families in the late 1600s. Also, the Burrough family would own the land now Alden Park in the early 1700s.



Isaac Stiles/ John Stiles /.../ Dr. Alexander Mecray house on Mecray Lane

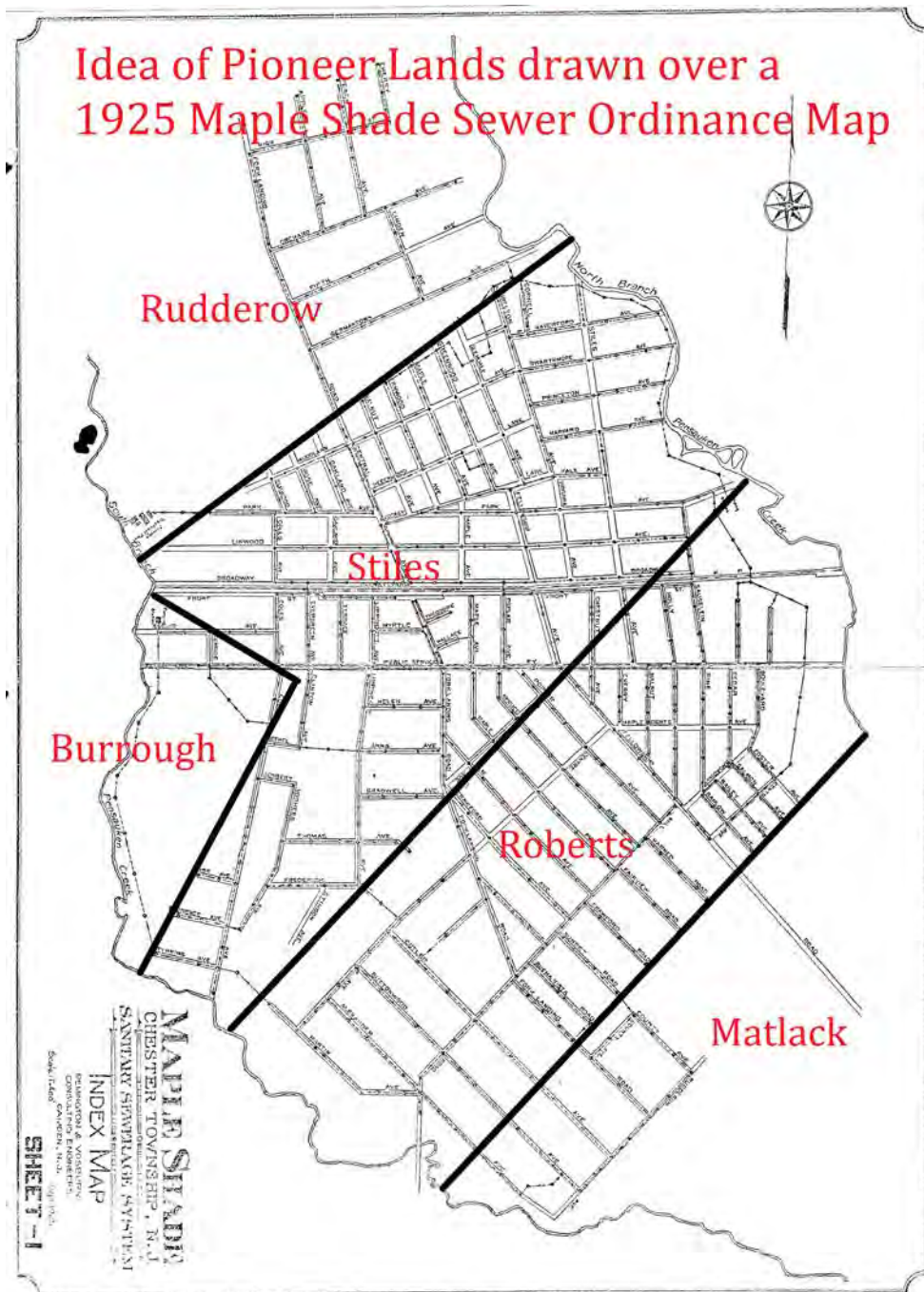


Burrough / Coles house near the grist mill and Pennsauken Creek. Photo taken in April 1939.
Last lived in by the Gibson family, a black family, who worked on the John and Edward Tiver farm.

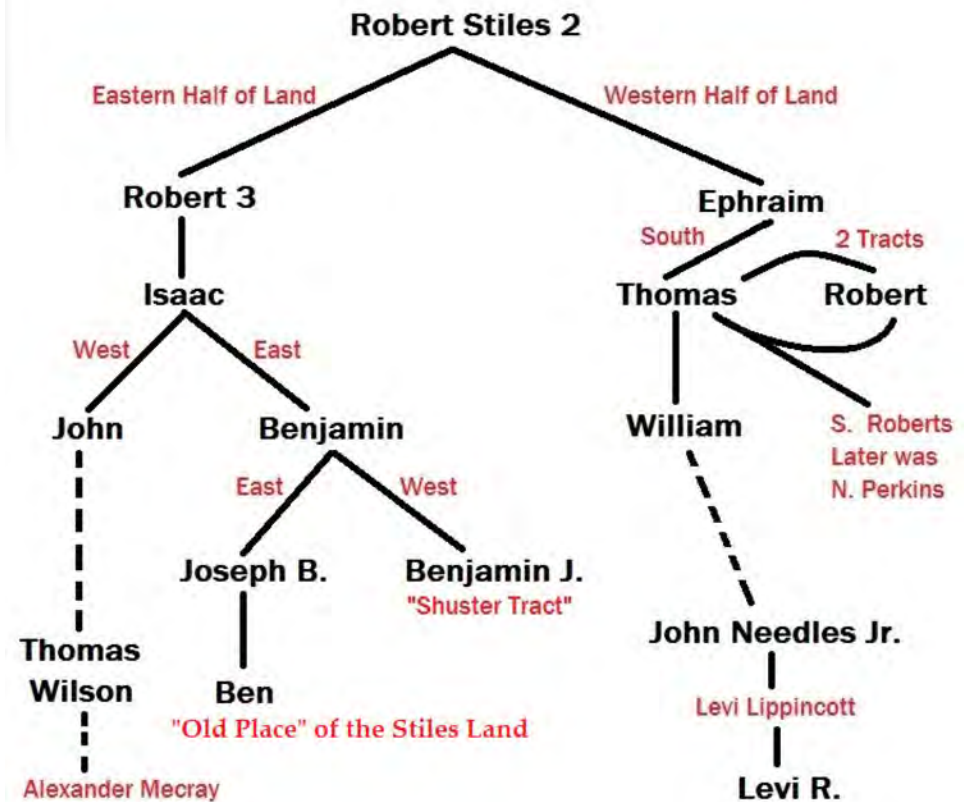


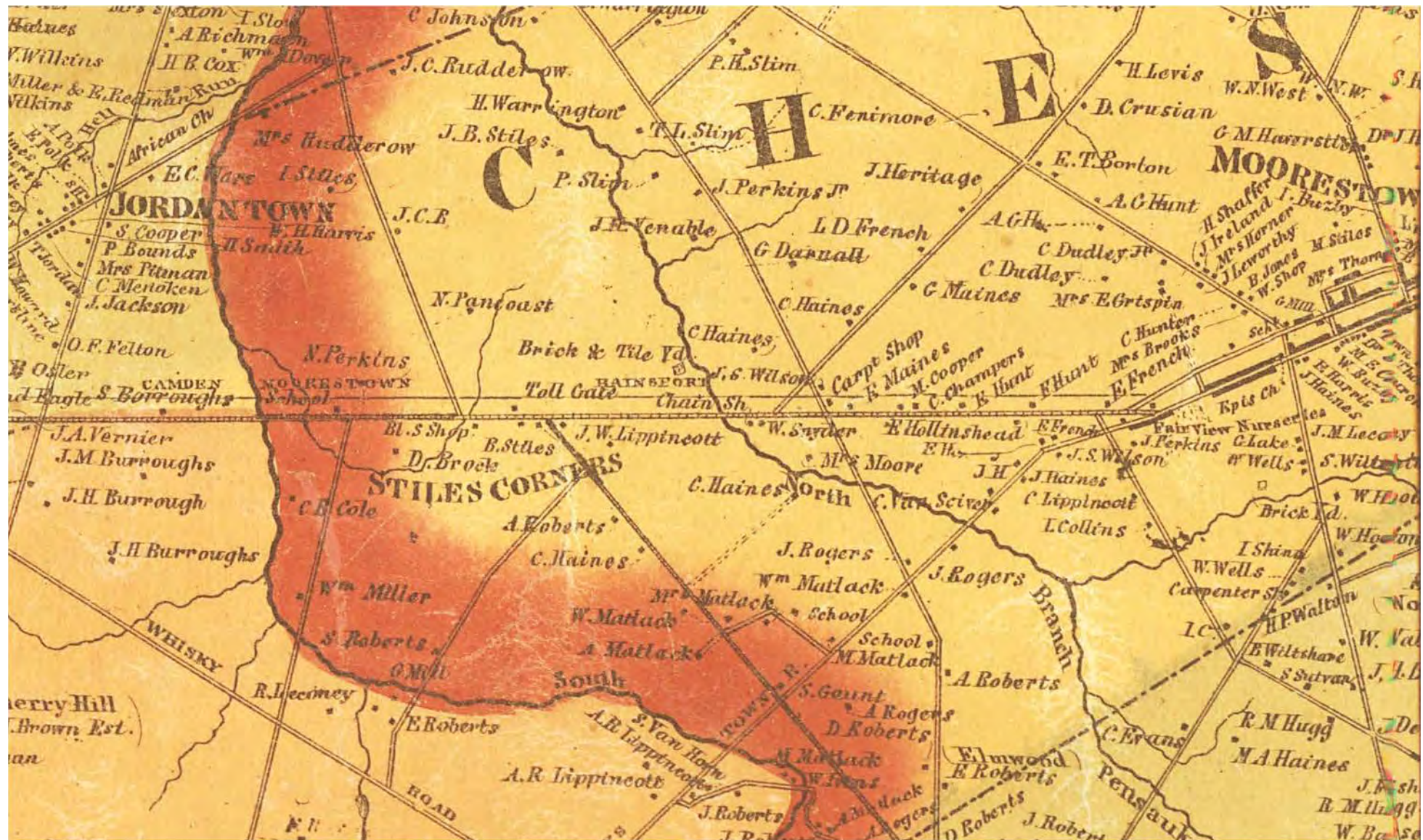
Burrough grist mill at the south branch of the Pennsauken Creek.
Photo taken April 1939. House and mill most likely were razed by Alden Park developers.

Idea of Pioneer Lands drawn over a 1925 Maple Shade Sewer Ordinance Map



Stiles Land Divisions in "Maple Shade, NJ"





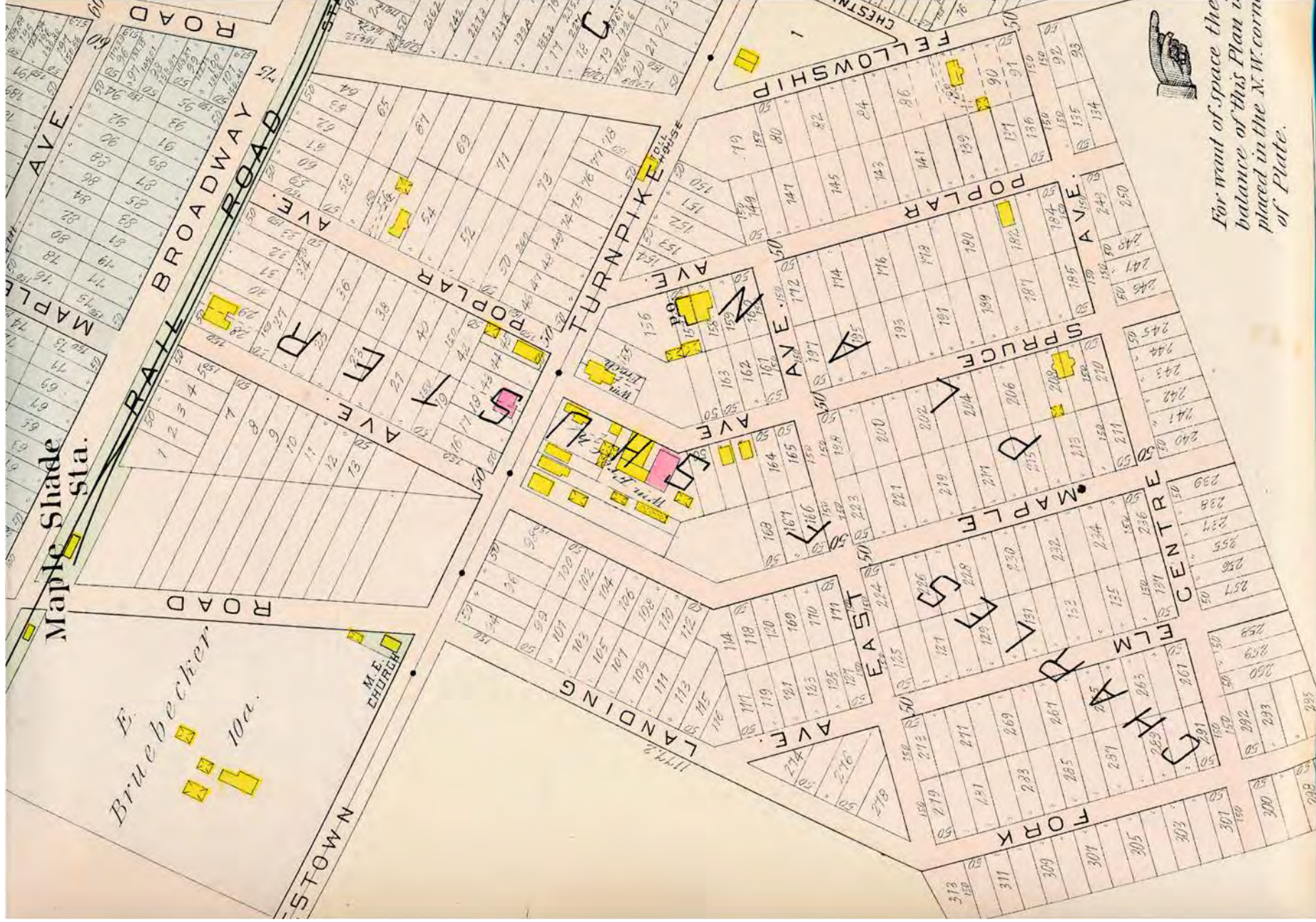
Detail from- Map of The Vicinity of Philadelphia, 1860,
From actual Surveys by D.J. Lake and S.N. Beers.



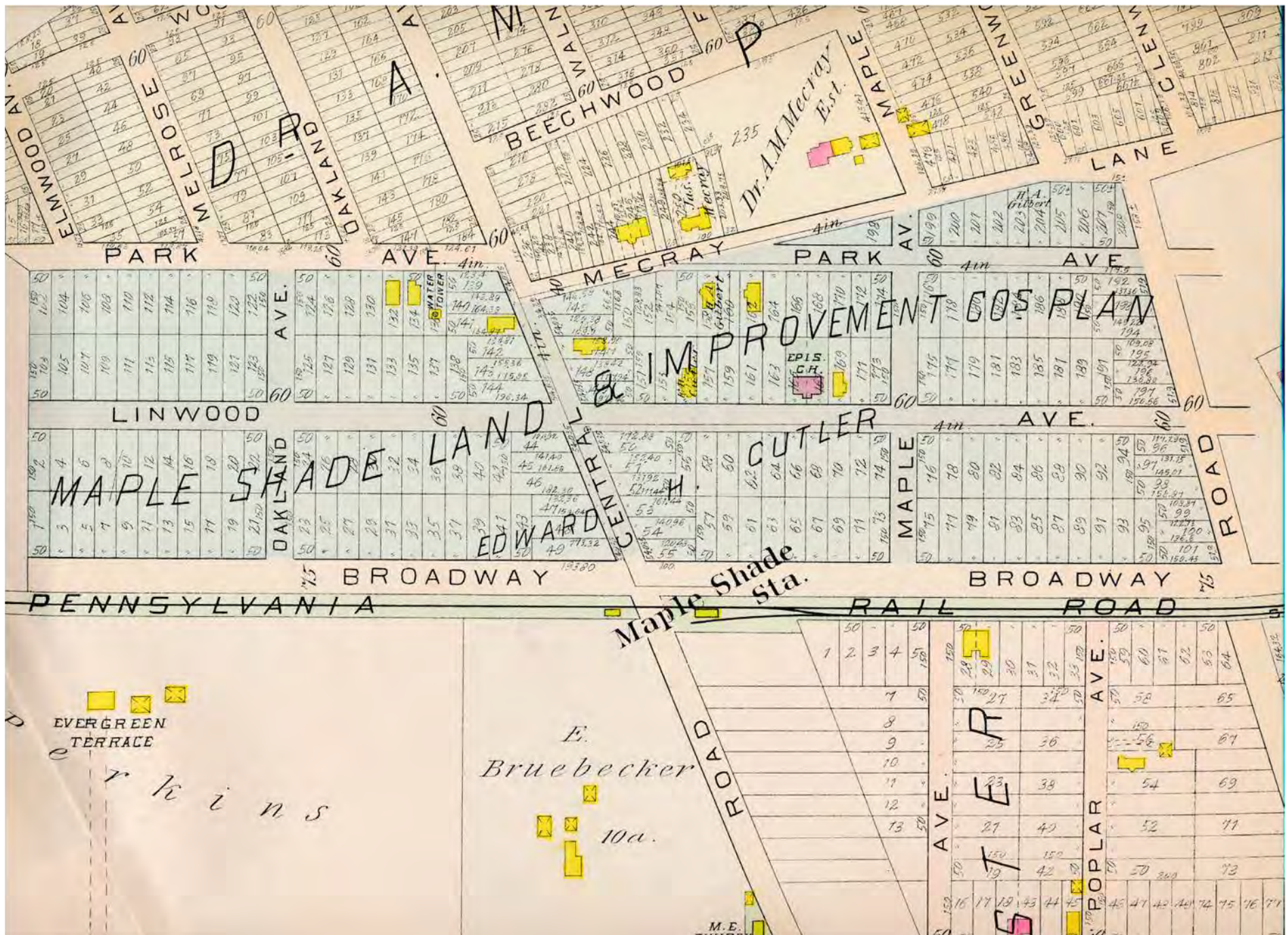
Train along tracks in Maple Shade. Passenger service ended in 1969.



The Maple Shade Jaycees first painted the train station “Big Red” in September of 1968. The above photos are from the Bicentennial year. The Twp. had the station painted in 2009.



For want of space the
balance of this Plan is
placed in the N.W. corner
of Plate.





The William Frech Wagon Co. which was on Spruce Ave. and was destroyed in a fire in 1940.



Main St. and Spruce Ave. A blacksmith house and shop bought by Christian Frech in 1870 before the village of Maple Shade. The house became Mennel's Dry Goods and Maple Shade Post Office.



Christian Frech
with baby Laura



Christian Frech's
son, Charlie Frech



Christian Frech's
son, William
Frech



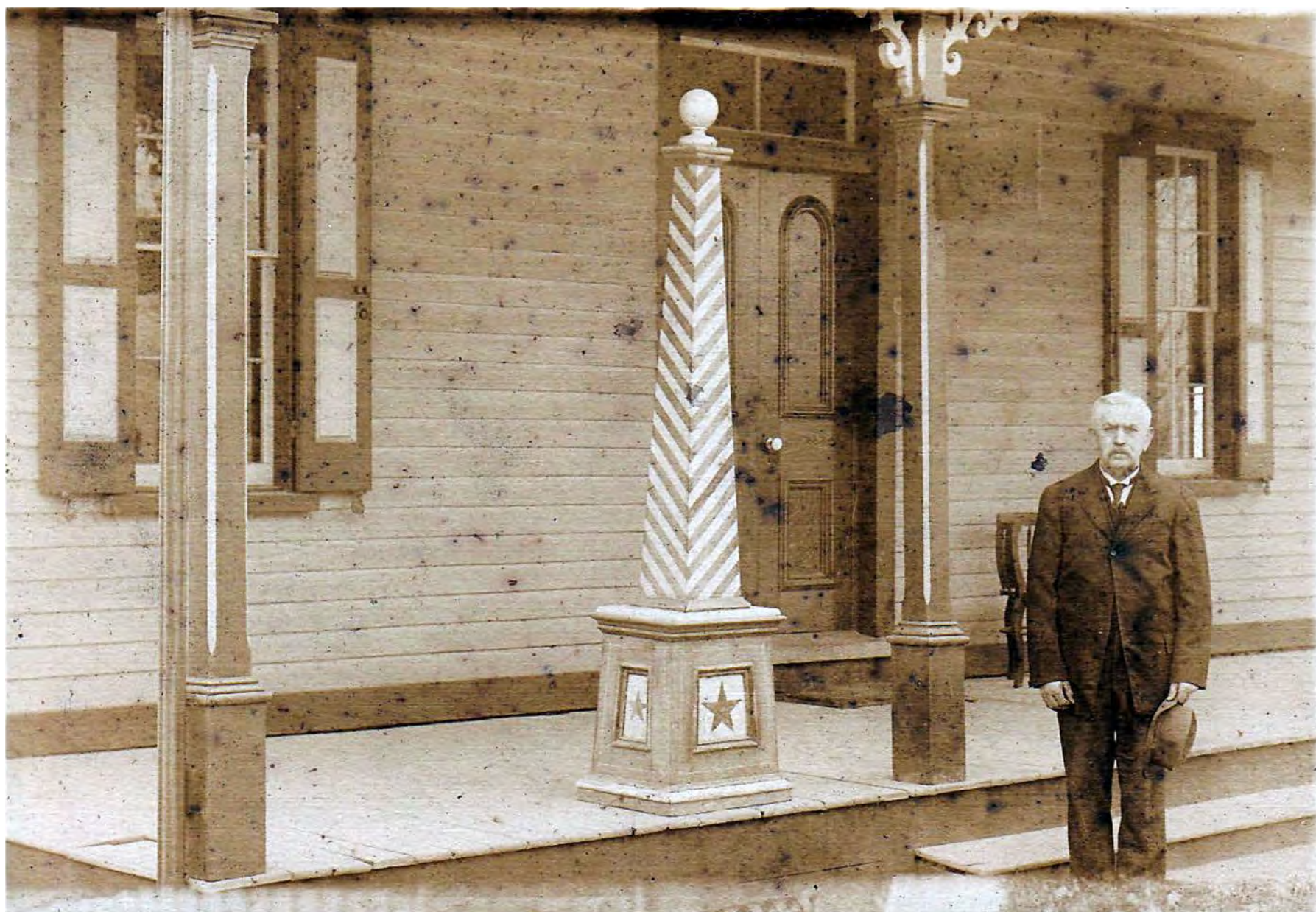
John and Laura
(Frech) Mennel



Laura Mennel



Louisa Mennel
in 1910



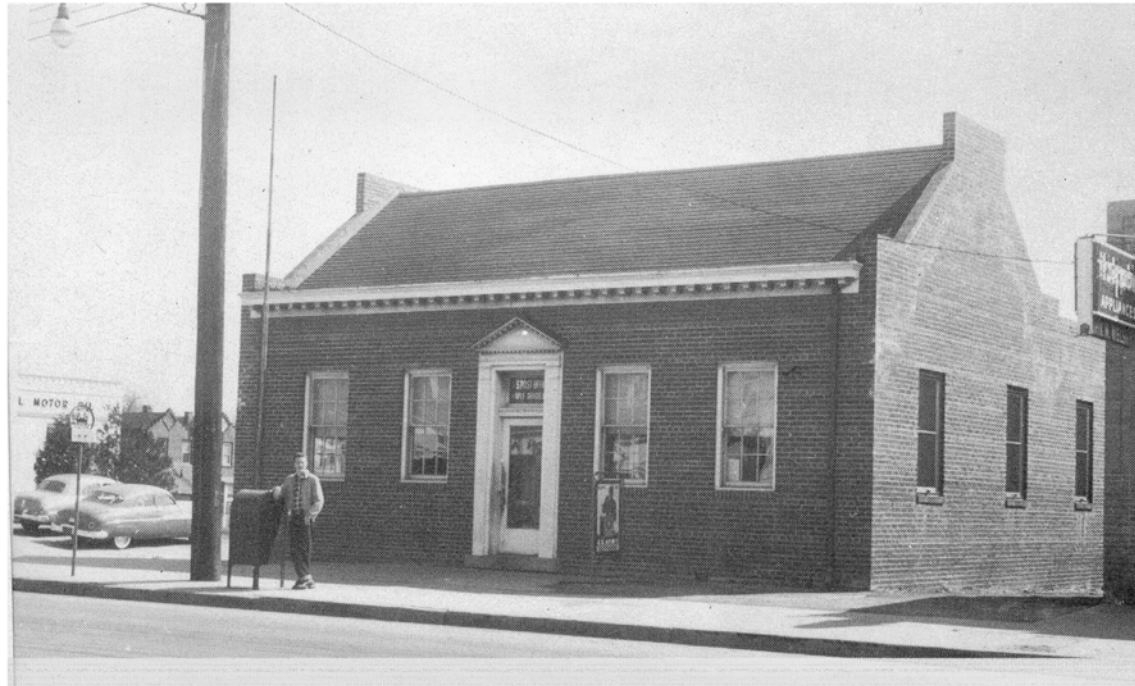
William Myers is standing in front of his barber shop at Main Street and South Maple Avenue.
Notice the striped barber pole. This is an old photo in postcard format.



The John Mennel Dry Good Store and Post Office, located at 116 East Main Street. Pictured from left to right are Laura Mennel, an unidentified person and John Mennel. John and Laura owned Mennel's Dry Goods Store, which was the location of the Maple Shade Post Office from about 1909 to 1926. Laura Mennel was postmistress. Her daughter Louisa took over as postmistress after she passed away.



The Maple Shade Post Office was then at 16 South Forklanding Road
from 1926 to 1946.



The Maple Shade Post Office was at W. Main St. and Margaret Avenue from May 1946 to August 1978.

The early years of the Maple Shade Post Office-

From April 28, 1887 to December 1, 1895-

William Broadwater was postmaster, (r.r. station)

From December 1, 1895 to October 31, 1904-

Henry Fahr had the Post Office at his general store

From October 31, 1904 to March 17, 1905-

There was no Maple Shade Post Office.

From March 17, 1905-

Mrs. Laura Mennel was postmistress followed by her daughter Louisa.



Maple Shade Post Office, Photo July 11, 2022

THE MAPLE SHADE PROGRESS

OUR GROWING SCHOOL.

Miss Gardiner tells us that:

Our first grade last year in October numbered 33. This year it is 55.

Last year our second, third and fourth grades collectively numbered 79 in October. This year the same three grades number 105.

Every month we issue a distinguished and a meritorious list.

Distinguished.

Fifth grade—Ethel Hurst.

Fourth grade—Marguerite Matthews, Furman Haines, Grace Carels, Stanley Good.

Meritorious.

Fifth grade—Myrtle E. Cramer, Eleanor M. Lewis, Mary E. MacElwee, Enoch Ratzell, Charles Reed, Horace Shinn, Amos Wood.

Fourth grade—Charles Culler, Evelyn Mattack, Frances M. Gardiner, Elanche Floyd, Marion Floyd, Theo Fox, Roy Addison, Elizabeth Wechselberger, Alice Thomas, Katharine Sauselein.

Third grade—Fred Brown, Olga Brown, Norman Burbaker, Louis Fountain, Ralph Lilly, Edward Hoehn, Stephanie Dunajsek, Ella Hess, Mildred Hewett, Charles Rodd, Percy Stratton, Eva Jordan, Magdaline Wechselberger, Lavina Walls, Esther Shinn, Mary Schubert, Elsie Maurer, Florence Ingram, Lillian Ingram.

Second grade—Otho Blinn, John Bluett, Dorothy Brown, Donald Burns, James Burns, Herman Fahr, Peter Fazekas, Elizabeth Hess, Edward Maudl, May Nesson, Raymond Nesson, Hugo Nyman, Ethel Oldershaw, Alfred Ridgard, Joseph Slavin, Ethel Through, Edward Stroemel.

First Grade—Francis Slavin, Stephen Toth, Evelyn Brown, Anna May Fowler, Helen Gibbs, Katharine Hess, Francis Ingram, Lila Knaub, Emma Michael, Dorothy Nesson, Jennie Rapp, Bessie Sauselein, Anna Schmidt, Rose Schmidt, Florence Storch.

Mennel's

Is the store to get your Groceries,
Dry Goods, Hardware, etc.

Sole Agent for

NEW PERFECTION OIL STOVE

Moorestown Road

Maple Shade

Kristof Bochler

MAPLE SHADE'S BAKER

Geo. Sauselein

BRICK AND TILE
CEMENT

Holly Avenue

Maple Shade

J. S. Collins & Son, Inc.

We handle a full line of Poultry
Feed and Supplies.

Deliveries in Maple Shade every
Tuesday and Saturday

Give us a trial

Moorestown

Merchantville

Fire and Tornado Insurance

Barlow & Company

ONE ACRE FARMS

\$300 and up

Houses, Bungalows and Cottages
for sale on easy terms

Home Office: Maple Shade

THE MAPLE SHADE PROGRESS

Vol. 1 No. 1

Saturday, November 4th, 1916

One Cent

A Few Questions For The Township Committee

Was not 3 or 4 electric lights ordered for S. Fork Landing and Mill Roads and Stiles Avenue about two years ago?

Was not the Stiles Avenue light erected and S. Fork Landing and Mill Roads are still waiting? Why?

Was not an additional light ordered for Stiles and Park Avenues since? What about the lights on S. Fork Landing and Mill Roads? And ordered two years ago! Some progress!

Why were not oyster shells put on S. Fork Landing Road to Mill Road instead of only to Anna Avenue?

Why not improve Anna, Coles and Lippincott Avenues?

Is it not time that these matters be attended to?

Maple Shade is entitled to better treatment. When do we get it?

? ? ? ? ?

THE TOWNSHIP COMMITTEE CANDIDATES.

One feature of the election on Tuesday that should concern deeply every voter of Maple Shade is the selection of men who will represent this town on the Township Committee at Moorestown. Two are to be elected and four candidates are before the voters: Theodore Sauselein of this town, and William Darnell, Samuel W. Smith and William C. Foulkes of Moorestown.

Sauselein and Darnell are on the Republican and Smith and Foulkes on the Democratic tickets.

Mr. Sauselein is of course well-known to us. He should, and no doubt will, represent us very satisfactorily. Mr. Darnell,

we have been told, is not very favorably inclined toward our town. Surely it would be the acme of folly to vote for a man who is not for us!

Mr. Smith, on the other hand, has promised to do what he can for Maple Shade, if elected, we have been informed. Mr. Smith could give the position the attention that it deserves, being a retired business man.

Therefore on the face of things, it seems that Sauselein and Smith are the logical candidates for Maple Shade voters to concentrate their votes upon.

This means a split ticket. But the man who puts politics above the candidate's is not much of an American citizen!

Continued on page 3.

THE MAPLE SHADE PROGRESS

THE MAPLE SHADE PROGRESS. Maple Shade, N. J.

Published weekly on Saturdays.
Fifty cents per year

WILLIAM F. BROWN,
Managing Editor,
Cutler Ave., So. of Mill Road.

The Maple Shade Progress stands for all that the word "progress" implies; in the fullest sense of the word. The progress of Maple Shade is our aim, and we will consistently oppose any person or group of persons, or anything that is opposed to the progress of Maple Shade.

Advertising Rates on Application.

Maple Shade, N. J., Nov. 4, 1916.

THE PROGRESS.

Maple Shade is growing. No doubt about it. Houses are being built right along. People are moving here. Our school was so crowded that the sixth grade had to be sent to Moorestown after the opening of the term.

But we need many improvements. A community that is so widely scattered as we are should have a means of placing our desires before the powers that be. We intend that "The Progress" shall be the medium. True, it is small, but we'll grow with the town. Send us the news and help both to grow.

Notice to Those Concerned.

H. S. Miller, formerly of Maple Shade, is not connected with "The Progress" in any capacity whatever.

WM. F. BROWN.

Officer Ward tells us that the Dr. F. G. Stroud had an emergency call in our town last Saturday evening.

FIRE AT L. H. HOLDEN'S.

A fire that threatened for a while to destroy the home of L. H. Holden on Linwood avenue, occurred on last Monday evening. While Mr. Holden was filling the tank on a gasoline stove, it suddenly exploded. Mr. Holden's head and arms were severely burned, necessitating treatment by Dr. Thorne, of Moorestown. The kitchen woodwork was badly scorched, and but for the quick work done by Mr. Dingley with an extinguisher, the house would probably have been destroyed.

Independent Co. No. 1 arrived shortly after the blaze was extinguished. Relief Co. No. 2, of Moorestown, made the run in six minutes from the time of receiving the call.

A children Halloween party was being held at the time, but all were safely taken out without injury.

COSTUME DANCE A SUCCESS.

Last Saturday evening the annual costume dance was given in the Parish House under the able management of Mrs. Wm. Frech. The dance opened at 8.30 with a grand march, at which time the judges selected the prize-winners, Mr. John Wilson, an Arab, as the best dressed; Mr. Frantz Harbaugh, Hottentot chief, most comic. At 10.30 refreshments were served, lemonade from a witch's Kettle, ginger cake and apples. The dance closed near midnight, and was in every way a great success.

The Progress is carried by Lucien Kenaga, Buena Vista Avenue and Mill Road, agent for The Bulletin and the Curtis Publications.

Maple Shade's Printer

WILLIAM F. BROWN
Cutler Avenue and Mill Road

THE MAPLE SHADE PROGRESS

Township Committee Candidates Concluded from first page

Voters of Maple Shade! Go to the polls on Tuesday determined to place the welfare of our town above mere partisanship by electing Theodore C. Sauselein and Samuel W. Smith to the Township Committee.

MAPLE LEAVES.

Nearly everybody doin' it! Doin' what? Carrying water.

Our baker, K. Bochler, was kept busy last week in hauling consignments of fruit trees and garden plants to residents of Maple Shade.

It is rumored that we are to have South Fork Landing Road covered with oyster shells to Mill Road before election. What's the significance?

Something should be done to prevent the trolleys speeding through our town in the manner in which they do, sometimes not whistling at crossings.

We have begun to number our houses in Maple Shade. Mr. Mendel, of S. Fork Landing Road, has set the pace, followed by his neighbor, Mr. Shoemaker.

Signs in the trolley cars:

"Vot for Charles E. Hughes to protect your home, wages, and country."

"Woodrow Wilson is the first president to make common cause with the farmer against the loan shark. The Rural Credits Act has freed the farmer."

Mr. Mendel, of 303 S. Fork Landing Road, has become tired of the Township Committee's delay in the matter of electric lights. He has put up a large lamp in front of his home. A mighty nice thing to do, Mr. Mendel. We travellers along the road appreciate it. Perhaps your action will shame the Township Committee into doing their duty.

Tax Collector Lippincott will be at Fahr's store on Monday, the 18th of December, from 2 to 3 P. M. to receive taxes. Step up and pay your fines for improving your property.

Mr. Martin Luther preached an evangelistic sermon last Sunday evening in the Congregational church. Mr. Luther is a layman from Philadelphia, who devotes his spare time to preaching.

The Congregational church, last Sunday evening extended a call to the Rev. A. H. Lee, of Capital Heights, Maryland. Rev. Lee has preached very acceptably on several occasions. He is a man of large experience in the ministry, and is also a physician.

The Philadelphia "Record" says there are more children in Maple Shade, according to the population, than any other town in New Jersey.

Funny how the politicians love the common "peepul" just about this time of the year!

The Republicans of Moorestown, Maple Shade, and the surrounding points, had a grand windup of the campaign last Saturday evening, in Moorestown, with a parade. It's all over but the shouting, boys! That's what the other fellow says, too!

Pianos Tuned and Repaired

Wm. Oelschlegel
PIANO INSTRUCTOR

Exponent of Sherwood's System

1317 Rose Street

Camden

Chas. Dodson
PLASTERING and CEMENTING

P. O. Box 155a

Union Avenue

Pensauken



Frank Gerken Sr. and then Frank Gerken Jr. ran the Maple Shade Progress newspaper for over seventy years.

The Gerken brothers, top down Frank, Paul and Bill.

The Maple Shade Progress newspaper building at E. Main St. and Fellowship Ave.

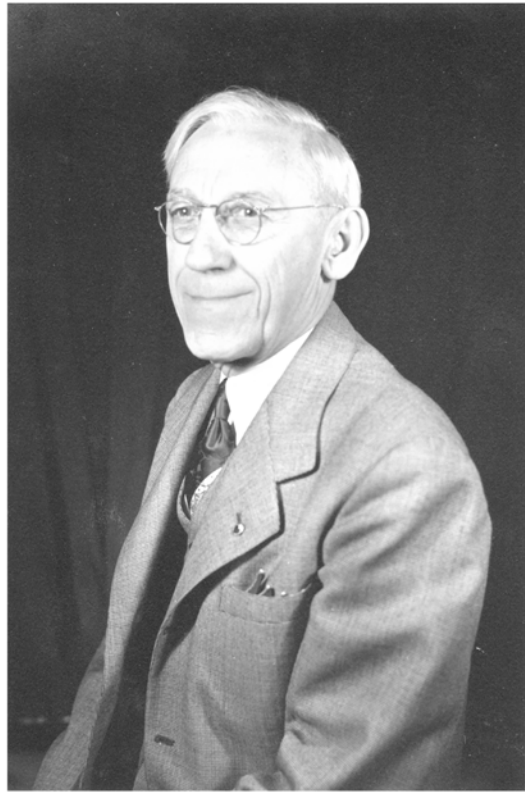
In the newspaper, Frank left and Bill right.



The first Edward Cutler Real Estate office was at East Main Street and North Forkland Road.

The office was later at Main Street and North Poplar Avenue.

Brother Arthur Cutler later opened an office for the Cutler Agency at Main Street and South Maple Avenue.



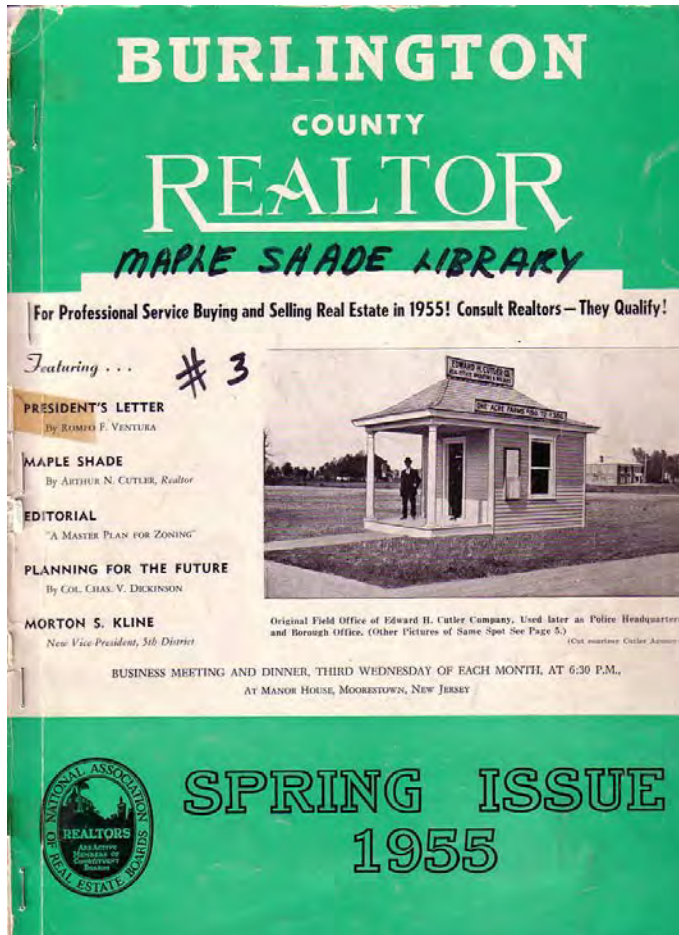
Arthur N. Cutler
Realtor

He was the first president
of the Maple Shade
Historical Society in 1956.





The Chesterford Schoolhouse, built in December 1811, in time became Maple Shade's first school. In 1909 it was no longer used for a school so it was returned to the Burrough family due to a deed stipulation. It was then used as a residence. Rev. Arthur G. Tippet lived there from 1916 to 1918. It was seized by the Township for delinquent taxes during the Depression. The Maple Shade Historical Society was started in 1956 with the purpose of restoring the building to a one room schoolhouse.



In the 50th year of Arthur Cutler being a realtor he wrote a short history of Maple Shade which appeared in this magazine. He then began a book about the town which his family completed after his death. The book is called “Maple Shade A Story of 300 Years.”



Early Maple Shade Historical Society planting a tree



The restored school was added to the National Register of Historic Places in 2009.



Mile marker from the Moorestown & Camden Turnpike. Two miles to Moorestown



Thomas J.S. Barlow Sr.



Thomas Barlow was a tailor who lived in Philadelphia. He and several other business men formed the Maple Heights Land Company and purchased the John R. Mason farm, south of Main Street and east of Fellowship Road in March of 1908. The farm would become the subdivision of “Maple Heights.”

In 1912 Thomas J.S. Barlow Sr. formed Barlow & Company with his sons, Thomas J.S. Barlow Jr., Frederick A. Barlow, adopted son Edwin F. D'Ancona as a salesman and son-in-law Charles Frederick Vogdes.



BUSINESS SECTION, MAPLE SHADE, N. J. (Pub. by Pettit's Drug Store)





Harris News Agency in 2003



Acme in 2003 during the "Plum tree phase" on Main Street



Square Club/ Masons Building

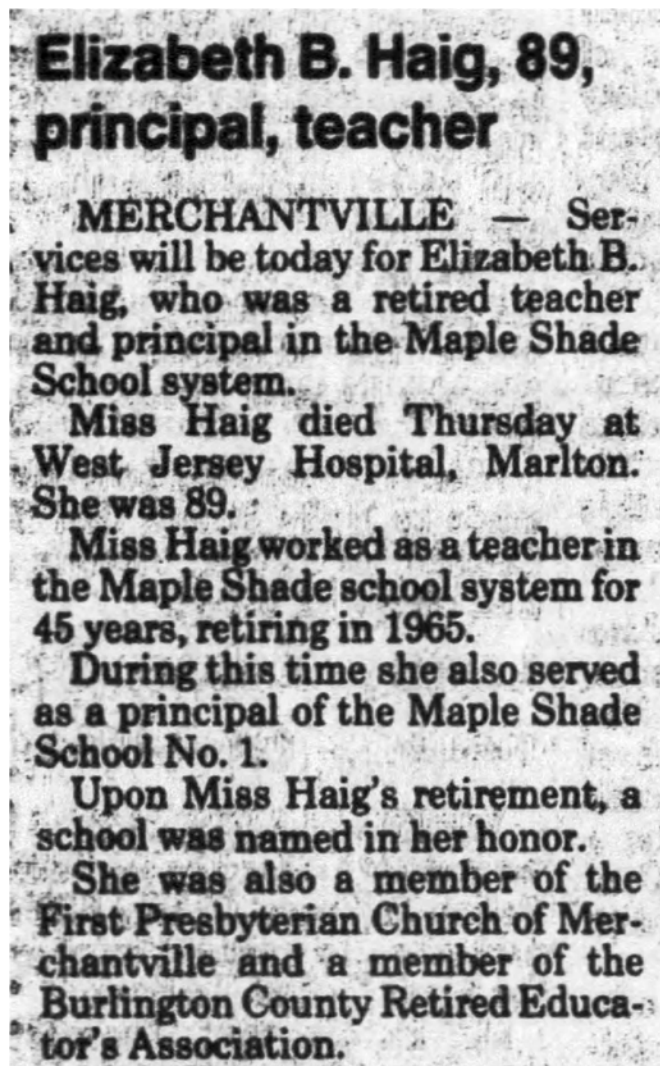


School No. 1 was on North Poplar Ave.,
lastly Wee Love Daycare

School No. 2 was on North Chestnut Ave.,
old building razed in 2008 for new building

School No. 3 is on Mill Road.

People who the Maple Shade Schools are named after-



From the Courier Post newspaper, January 6, 1990
School Number 1 (Later Wee Love daycare) was renamed after Elizabeth B. Haig.

Dr. R. Steinhauer, Lutheran Minister

The Rev. Dr. Ralph J. Steinhauer, pastor of Holy Trinity Lutheran Church, Maple Shade, N. J., since 1934, died Wednesday in Cooper Hospital, Camden. He was 57.

Dr. Steinhauer, a graduate of Muhlenburg College, Allentown, Pa., began his ministry here shortly after graduating from Lutheran Theological Seminary, Philadelphia. He was a member of the Maple Shade School Board and was past president of the Maple Shade Lions Club. He was Maple Shade Man of the Year" in 1959.

Surviving are his wife, Mrs. Ethel M. Steinhauer; two daughters, Mrs. Lulu Ann Sheetz and Mrs. Marion Stavin, two brothers, a sister and four grandchildren.

From the Philadelphia Inquirer newspaper, August 25, 1966
School Number 2 was renamed after Rev. Ralph J. Steinhauer.

Mrs. Maude M. Wilkins, 74

Ex-Teacher Honored

Maple Shade Renames a School

MAPLE SHADE — Although her name was misspelled on the school's PTA's program, Mrs. Maude M. Wilkins returned to the township last night to reminisce and re-acquaint herself with former pupils.

Mrs. Wilkins, now 74, was honored at the Founder's Day celebration in the former Mill Road School, renamed in her honor by the board of education last November.

She arrived full of fun and kind words about former

teachers at the school — and she was even willing to play the piano to accompany the songs welcoming her home.

More than 100 former teachers and pupils of the school attended the meeting and, although the few speeches were brief, repeated thanks were given to Mrs. Wilkins.

MRS. WILKINS arrived in Maple Shade in 1919, when she taught third and fifth grades in the former Poplar Avenue School, now the

Elizabeth B. Haig School. She became teaching principal there in 1925.

She became the first principal of the Mill Road School in 1927, when it was just an eight-room structure.

Through her encouragement the Mill Road School PTA was formed in 1929. Mrs. Wilkins remained at that school 33 years before moving back to her home state, New York, in 1960.

She didn't give up teaching, however, and now teaches first grade in Adams, N.Y.

From the Courier Post newspaper, February 17, 1971
School Number 3 was renamed after Maude M. Wilkins.

Maple Shade. The Board of Education changed the name of School No. 4 on North Fork Landing Road to the Howard R. Yocum School, in honor of the district's late solicitor. Yocum, who served as solicitor for 52 years, died Oct. 8 in an automobile accident on the Admiral Wilson Boulevard.

"Mr. Yocum was very well respected by the community and by those who worked with him here," said district Superintendent John Sherry. "We had one building left in the district that didn't have a name and we decided it was an appropriate time to name it."

The school houses students in kindergarten through 8th grade.

From the Philadelphia Inquirer newspaper, October 25, 1989
School Number 4 was renamed after Howard R. Yocum.



Maple Shade School No. 1, formerly the Chesterford School, late 1800s





Mill Road School is in the lower right corner. Photo taken July 3, 1951



Rt. 73 curves from lower left to upper center. South Fellowship Rd. joins Rt. 73 in center. Spring Hill Country Club is at lower left and center. Photo taken May 15, 1955



Maple Shade Traffic Circle, July 3, 1951

Rt. 41 Kings Hwy is vertical. Rt. 73 is left to right. Rt. 38 is diagonal from left to right.
Matlack's Ice Cream Parlor is left of Rt. 41 in center. Lenola Rd. is left to right $\frac{1}{4}$ down from top.



North side of Maple Shade, Late 50s- early 60s



Main Street looking west at Forklanding Road

Main Street looking east at Forklanding Road

North Forklanding Road looking toward Main Street



Roxy Theatre 1941

Roxy Theatre 1947

Roxy Theatre 1947



Main Street, Maple Shade, N.. J.



1937 parade on Main Street, looking east from Forklanding Road



1937 parade looking east



1953 parade West Main Street from Forklanding Road



1953 parade west of Forklanding Road



1953 parade looking east to Forklanding Road



Northwest corner of Main Street and Forklanding Road







At the OLPH Shrine



Main Street and South Maple Avenue



Fred Olt Sr. (owner of Maple Shade Garage) is the mechanic on the right next to the guy in street clothes.



Northeast corner of Main Street and Forkland Road
Originally this store was the second Acme (American Store) built here.
The first one was a Childs' store prior to Acme buying that chain.



Bicentennial Year-

Several fire hydrants were painted as above.

June 30th, the northern section of the Bicentennial Wagon Train, a 40 plus caravan of covered wagons, men, women, kids, dogs and livestock stopped in at the big lot in center of town (The new Post Office wasn't built yet.) to rest a bit. The wagon train was on its way from Maine to Valley Forge where it would meet with other trains from all sections of the U.S.A.







Bicentennial July 4th celebration

A well-attended ceremony was held at the
“Little Red Schoolhouse.”









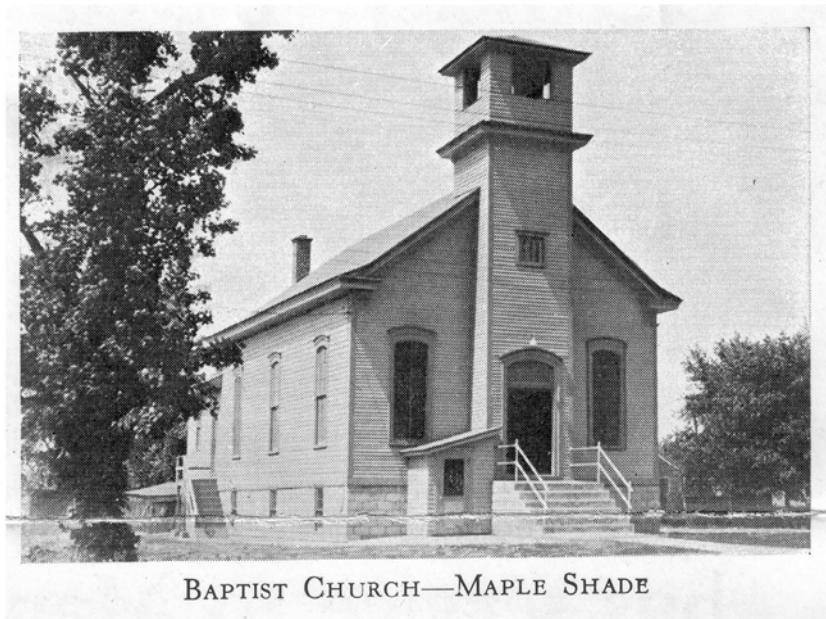




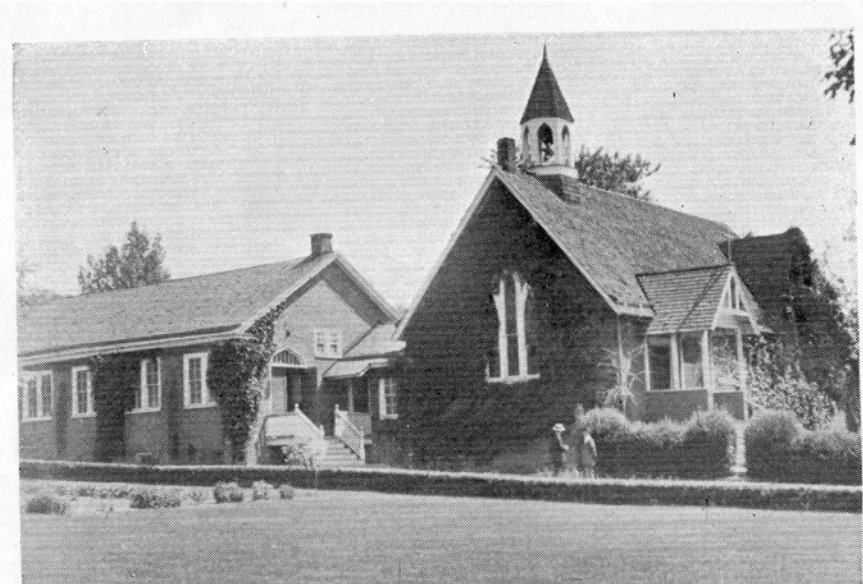
Peace Monument



Our Lady of Perpetual Help Church, Maple Shade, N. J.



BAPTIST CHURCH—MAPLE SHADE

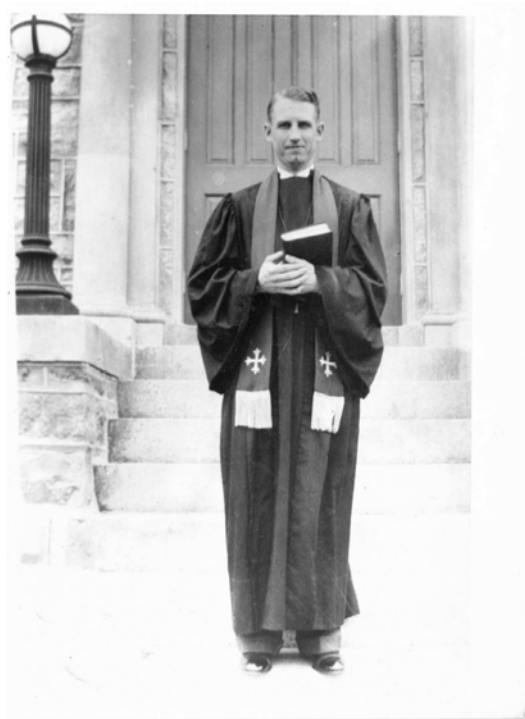
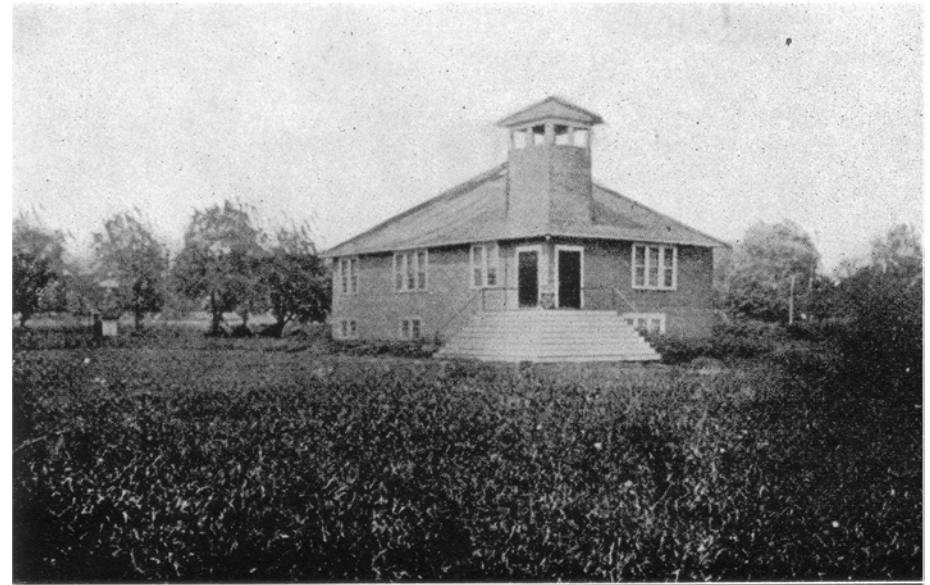


ST. JOHN'S EPISCOPAL CHURCH, MAPLE SHADE, N. J.

Congregational Church

Pastor Ralph J. Steinhauer

Holy Trinity Lutheran Church





Roland L. Pettit and Miriam his wife ran the first drug store in town, Pettit's Drug Store

Southeast corner of Main Street and Forklanding Road



MAIN STREET LOOKING EAST



Northwest corner Main Street
and Forklanding Road

Betterment League Community Hall

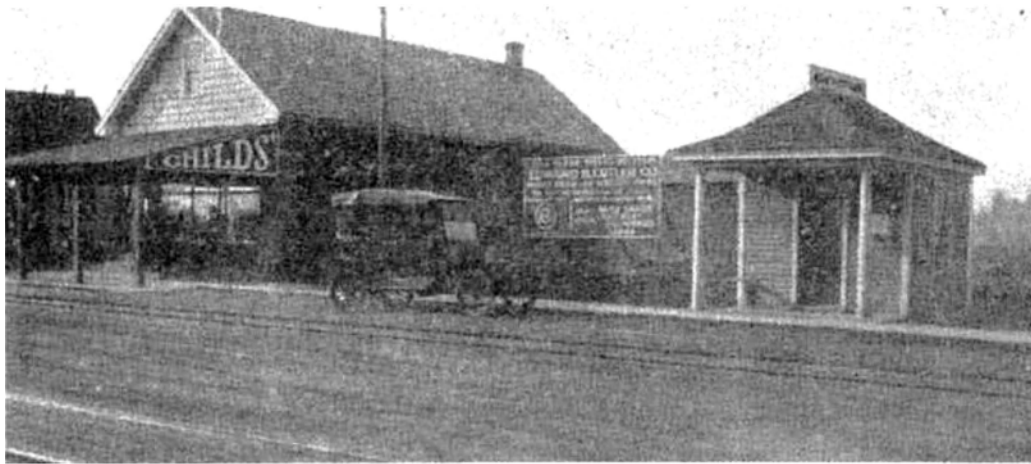
Ward's Gas Station in 1930

Memorial Day Parade 1927



Main Street looking west from Forklanding Road in early 1922
If you look really hard to the right you can see the Community Hall starting to be built.

Childs' Store/ American Store
The Childs' chain was bought by Acme in 1917.

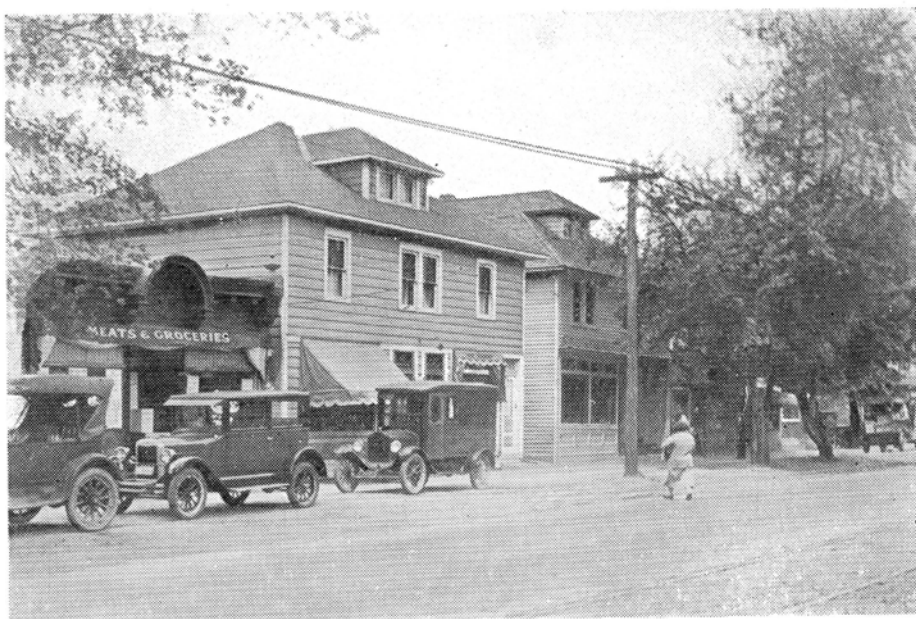


YES, THE CHAIN STORES ARE HERE



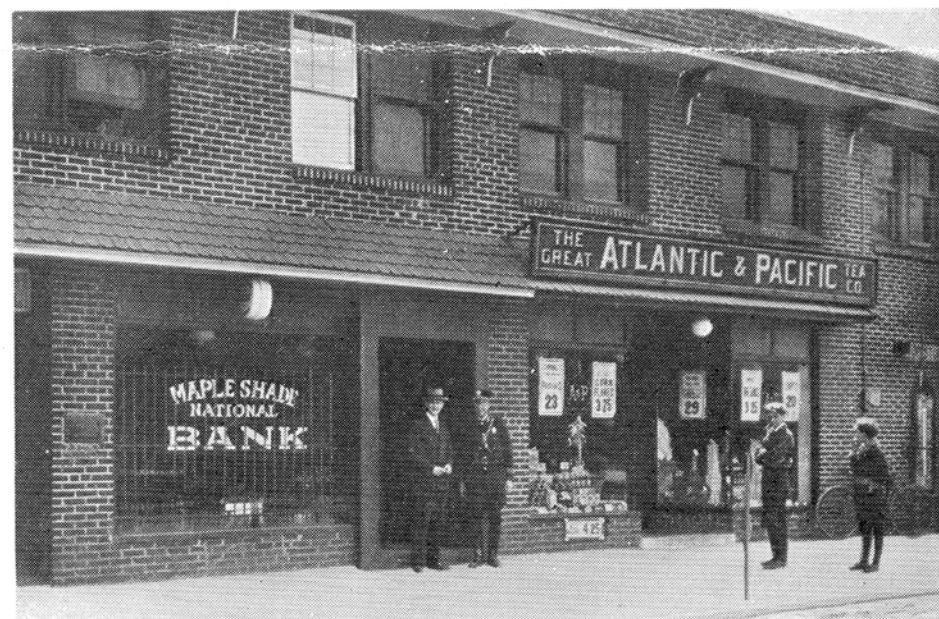
Northeast corner of Main Street
and Forklanding Road





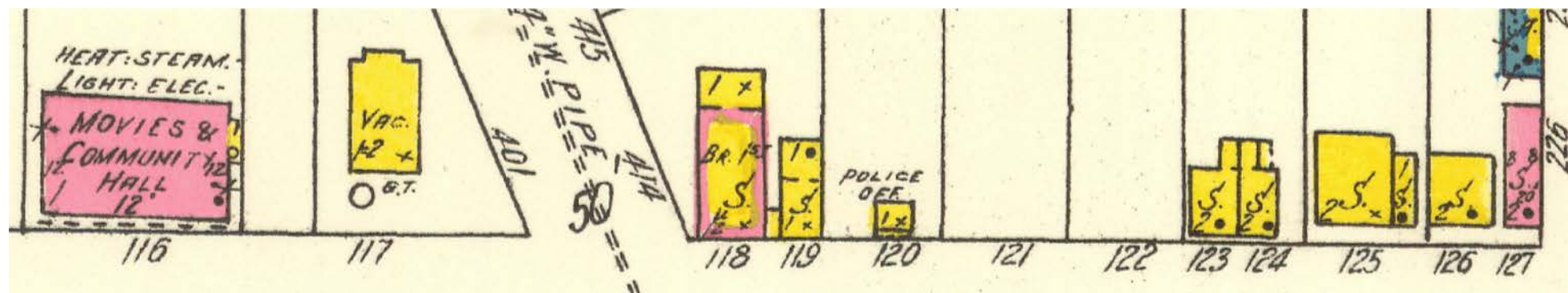
ANOTHER VIEW OF MAIN STREET, MAPLE SHADE

These buildings are to the right of where the Roxy would be built.

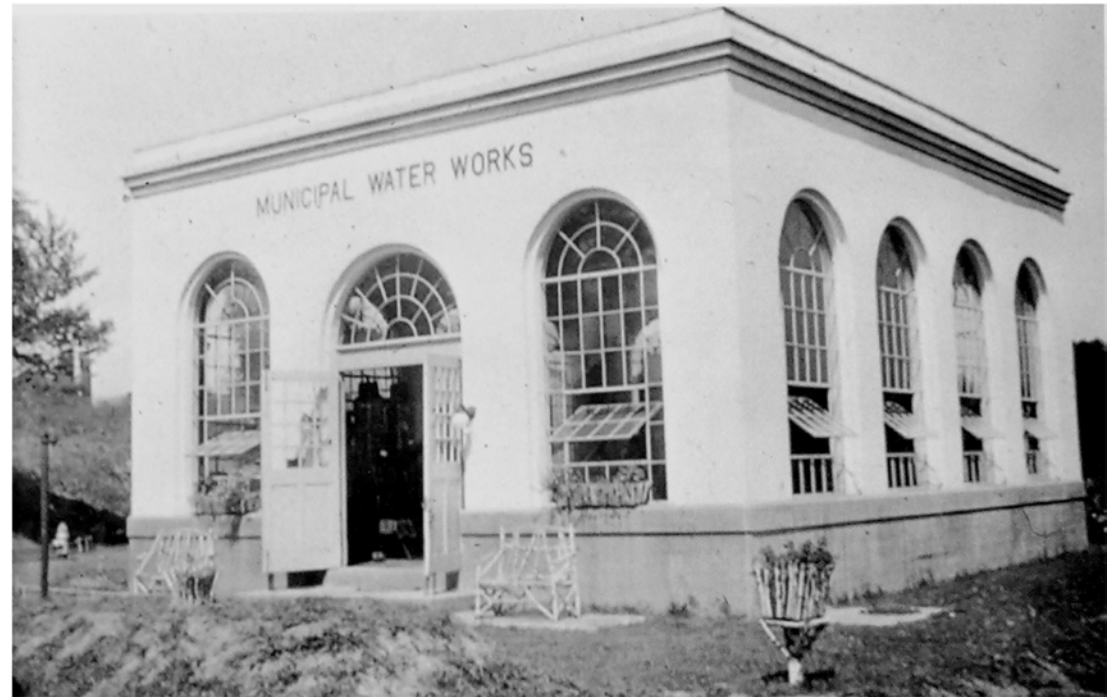


NATIONAL BANK AND CHAIN STORE—MAPLE SHADE

Thomas Barlow and Police Chief Ward in front of Maple Shade's first bank



The north side of Main Street at Forklanding Road (1923 Sanborn map)



Old water tower that was on North Cedar Avenue

Maple Shade Municipal Water Works
East Main Street by the north branch of the
Pennsauken Creek



Henry "Pop" Walters owned and managed Walters' Confectionery at 8 West Main Street.
After his death his daughter Margaret ran the store.

Inside Margaret's c. 1940. Margaret is at right behind register. Note people eating in back room.
In the 60-70's back room housed a walk-in box for Breyers ice cream, a telephone booth and several pin ball machines. There was an additional back living room. (George Conley Esq.)



John Bonamo of Bonamo's Meat Market,
Mill Road and South Forkland Road about 1955

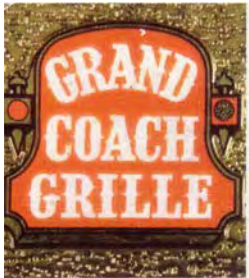


Leonhardt's Hardware store was bought by Mike Farace and continued by his son Dave as "Mike's Hardware."





Nichols Department Store, Rt. 38 (Where Lowe's is now), Photo by John Flack, August 1985



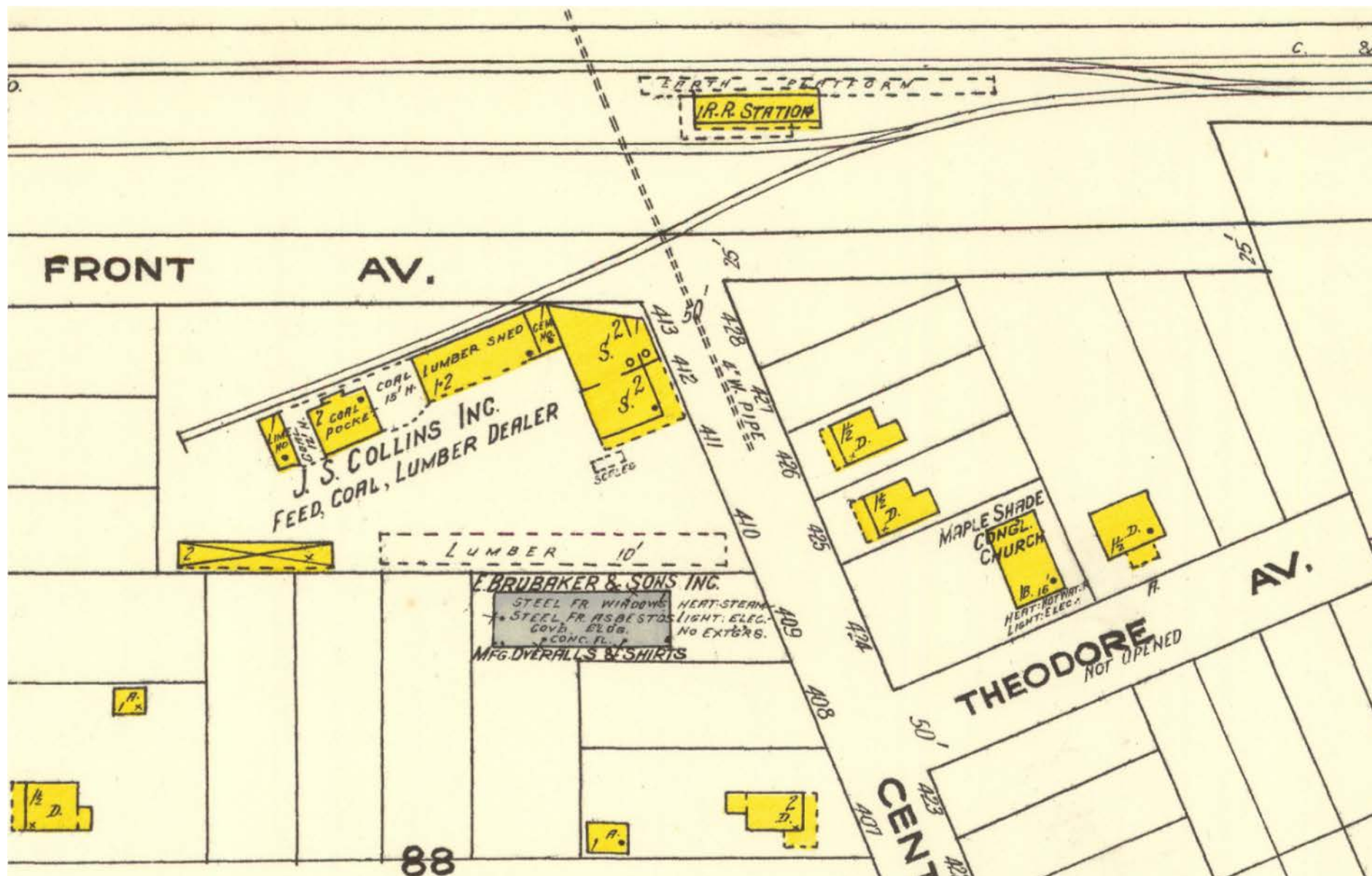
North Forklanding Road

(Where Maple Shade Mews senior apartments are.)

Former John S. Collins & Son Lumber Co.

Edsam Screw Machine Products
(formerly Brubaker uniforms factory)

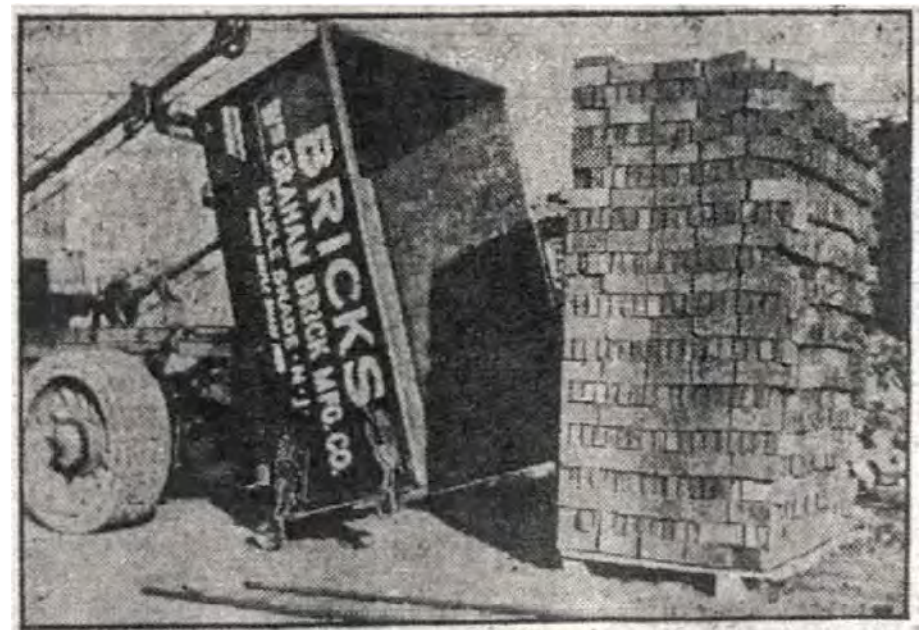




Sanborn map 1923

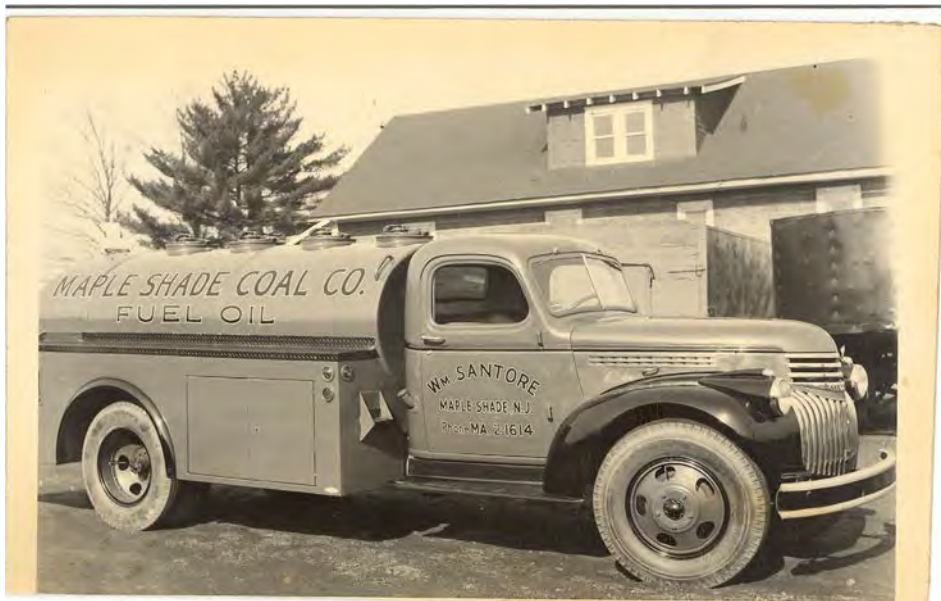


Graham Brickyard, North Pine Avenue





Graham Brick truck in front of dome roofed kilns



Santore's Maple Shade Coal Co., Stiles Avenue





Maple Shade Coal Co., Stiles Avenue



WARICK FASHIONS

Stiles and Park Avenues
MAPLE SHADE, NEW JERSEY

WARICK FASHIONS

Stiles and Park Avenues
MAPLE SHADE, NEW JERSEY







Old Oak tree that was on
North Forklanding Road



Moorestown Pub in 2003 (It really was in Maple Shade.)

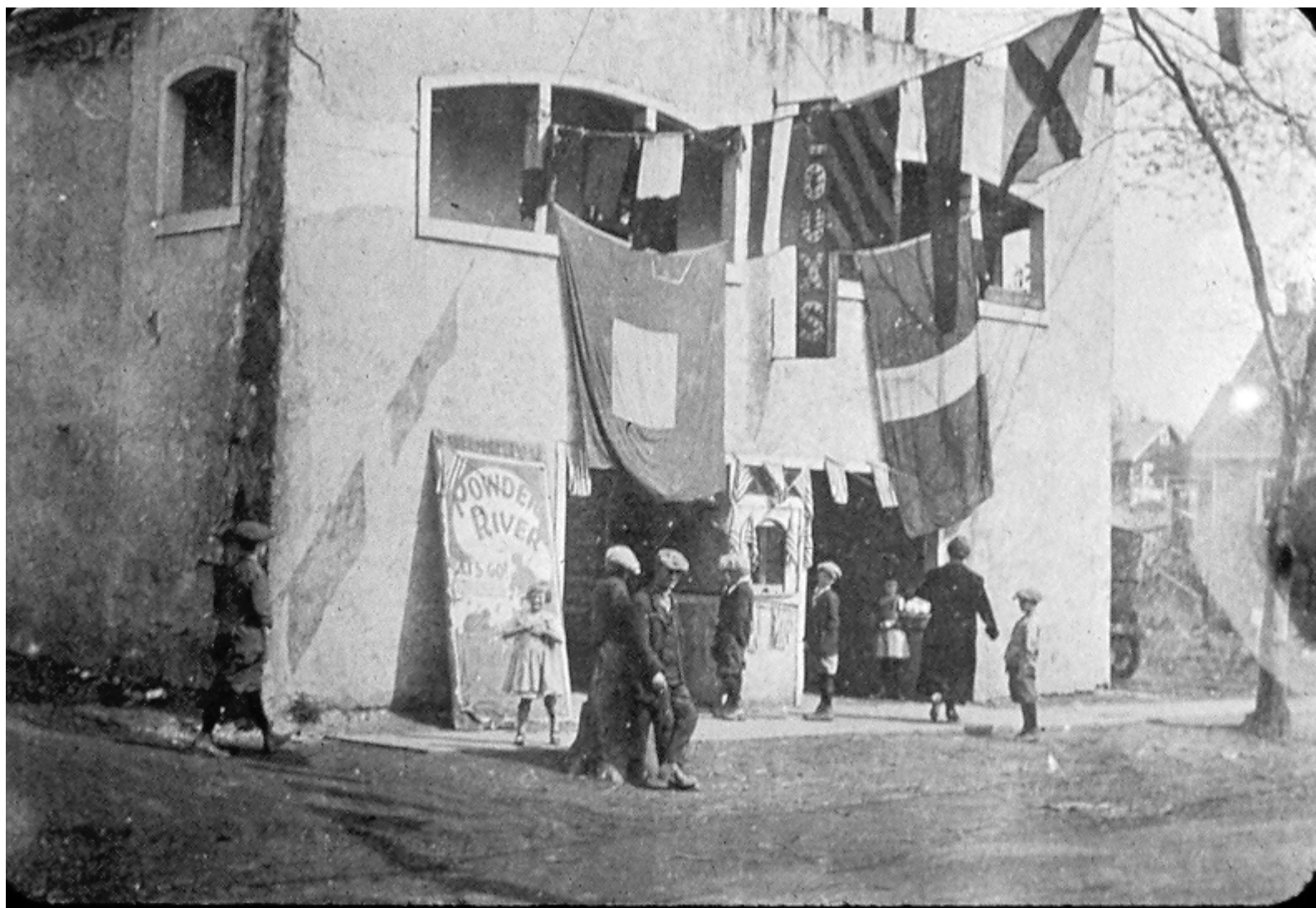


Fellowship Grill
Frank Duetsch
3rd person on stool from right
Fellowship Rd in Maple Shade, NJ

Mennel's Inn, East Main Street and Spruce Avenue







The Loux moving picture parlor, South Forklandig Road



Tennis Grounds, Maple Shade, N. J.



OFFICIAL
SCORE CARD

★

Maple Shade Aces

Member of the National Division of
the Burlington County Baseball League

Fellowship Road and Linwood Avenue Ball Park

Maple Shade

★

New Jersey



THE MAPLE SHADE ACES

1941 CHAMPIONS OF THE BURLINGTON COUNTY BASEBALL LEAGUE

Shown above is the entire squad of the Maple Shade Aces. From left to right (standing): Elmer "Daffo" Dill, pitcher; George Swover, second baseman; Donald Young, first baseman; Frank "Rock" Pinto, manager; Joseph Murphy, pitcher; Charles Wilson, shortstop, and Edward Chiosso, catcher. Left to right (kneeling): Robert "Beetle" Beirne, outfielder; Raymond Ventura, outfielder; Frank "Shadow" Schultz, outfielder; Thomas McElligott, third baseman and John Sexton, outfielder.



Maple Shade Aces

BURLINGTON COUNTY BASEBALL LEAGUE CHAMPIONS — AMERICAN DIVISION — 1946

From left to right (standing): Joseph F. Murphy, pitcher; Donald C. Young, infielder; Edward A. Chiosso, catcher; Robert M. Beirne, outfielder; Joseph R. Gaughan, pitcher; Louis R. Bartello, outfielder; Thomas F. McElligott, infielder. Left to right (kneeling): George S. Bailey, catcher; Earl W. Johnson, Jr., outfielder; Raymond W. Ventura, outfielder; Frank J. Pinto, manager; James W. Chiosso, infielder; Frank S. Schultz, infielder. (Not shown) Elmer H. Dill, pitcher; Richard A. Reiss, infielder.



Undefeated Maple Shade Ramblers Football Team — 1949

Maple Shade Ramblers football team which finished its second consecutive undefeated season, and has won 17 consecutive games in two seasons, with no defeats and no ties. Piloted by Coaches Frank Schultz and Jack Humes, the 1949 squad scored 220 points to seven for the opposition. Shown in the picture above from left to right are: (Front row): Anthony Dimezza, Frank Cavallo, Jack Thiel, Kenneth Jacoby, Nicholas Riccardo, Edward Dugan, mascot; Ben Sellitto, Frank Rahn, George Minnick, Ralph Ensign. (Middle row): Malcolm Friedel, co-captain; Harley Conn, Albert Fox, Joseph McBride, William Durham, Thomas Sherf, Edward Grinnen, Floyd W. Bauersfeld, Arthur Auge, Daniel Bailey, Robert Constantine, Clarence Musselman, Edward Stewart, co-captain. (Back row): George Wilson, Charles Pfiefer, William Mason, Daniel Creedon, Peter Hunter, Joseph Cavallo, Frank Schultz, coach; James Ferro, Sal Mangione, Stanton Webb, Clifford Thalwitzer and James Dugan. Jack Humes, line coach, is not shown.









Feb. 1950 MARY & JOANN



EASTER 1955



MAY 1959





307

303

Main St. Maple Shade



ALHAMBRA



MILL ROAD — MAPLE SHADE, N. J.

BB-H773



Thomas J.S. Barlow Jr.'s "Barlow Mansion" on Mill Road

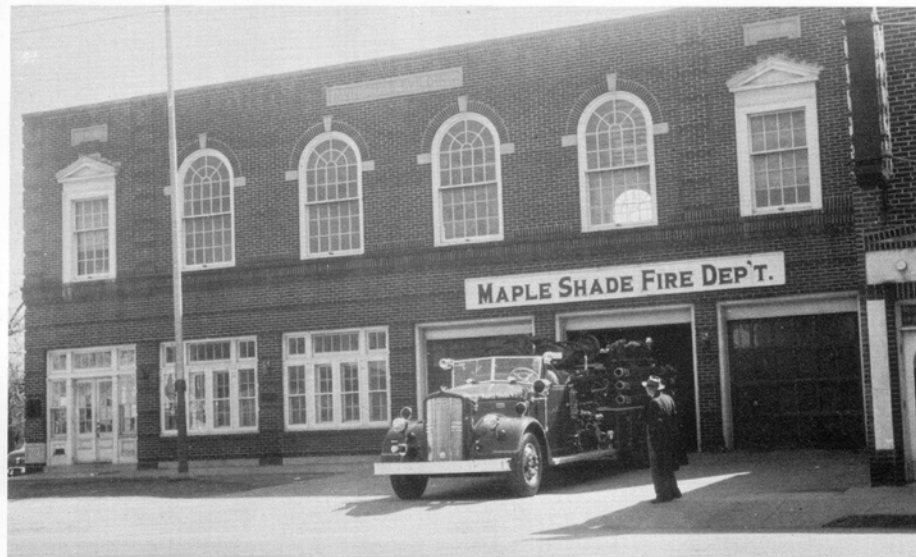
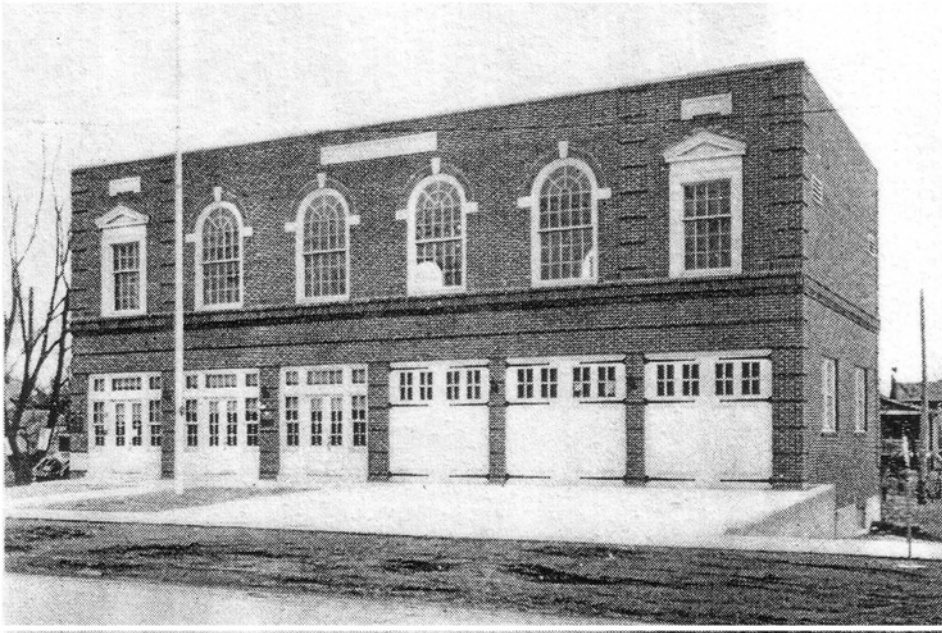




1927 was a very big year for Maple Shade.

A Municipal Building housing the Police and Fire Departments was built at Main Street and South Maple Avenue. Also, a sewer system was installed throughout the town.

At left is the Municipal Building when it was first built in 1927.



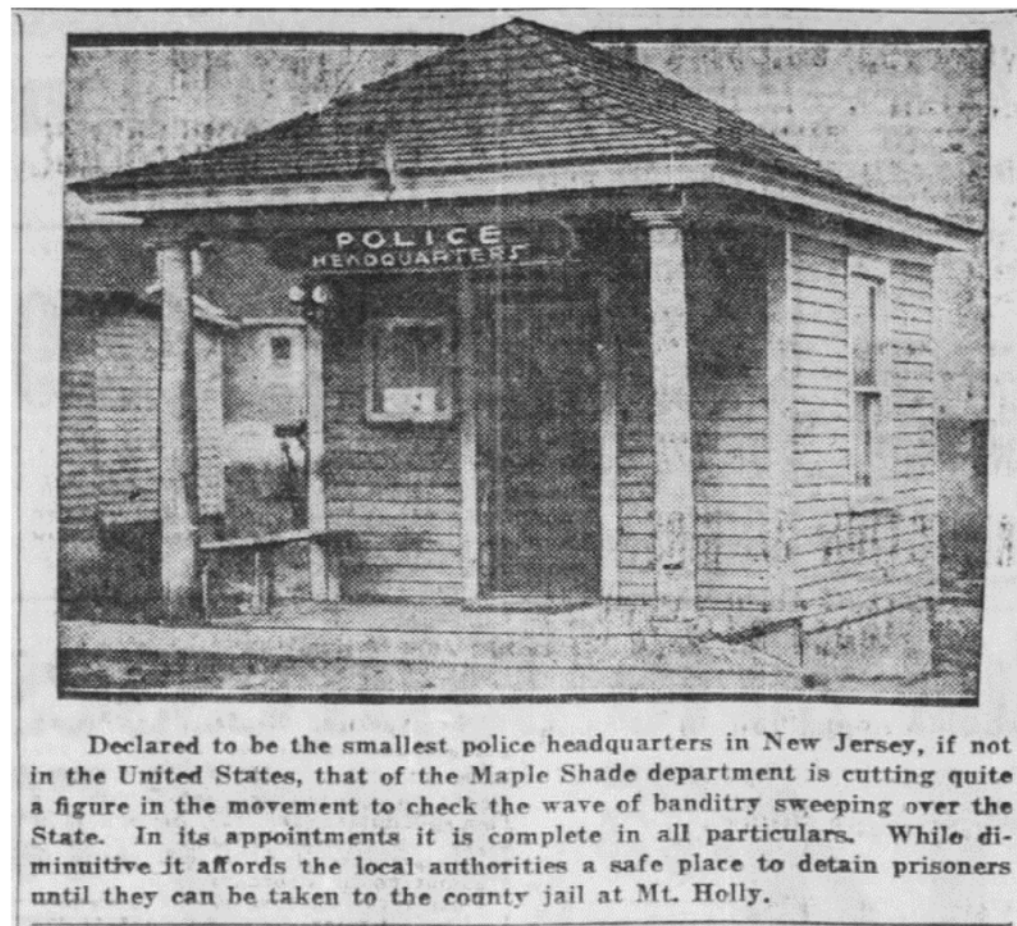
Municipal Building and Fire Department, Maple Shade, N. J.





Police Chief Clarence L.E. Ward

He was Maple Shade's first policeman in 1914 and several years later became Chief. The first police station was the old Edward Cutler Real Estate field office on Main Street.



Declared to be the smallest police headquarters in New Jersey, if not in the United States, that of the Maple Shade department is cutting quite a figure in the movement to check the wave of banditry sweeping over the State. In its appointments it is complete in all particulars. While diminutive it affords the local authorities a safe place to detain prisoners until they can be taken to the county jail at Mt. Holly.



MAPLE SHADE

SITTING, left to right: Alfred M. Addison, Police Recorder; Clarence L. Ward, Chief. STANDING, left to right: Leroy Jackson, Sergeant; Grover Lentz, Patrolman; John Siebke, Patrolman

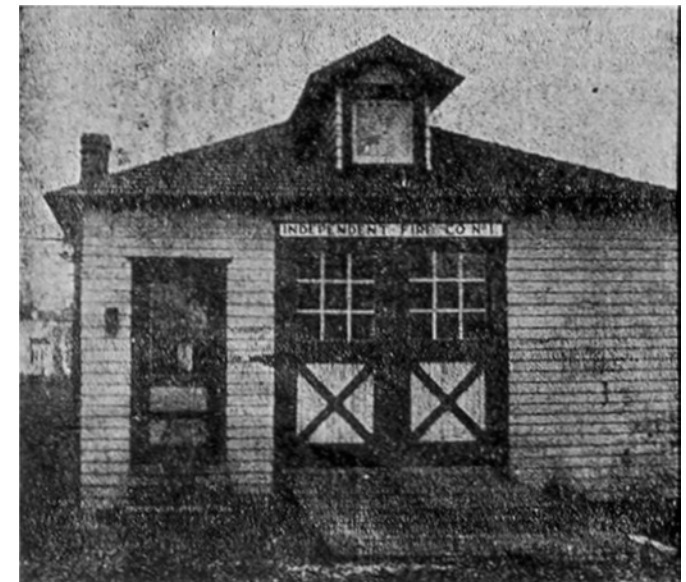


Alfred Brooks Jr.

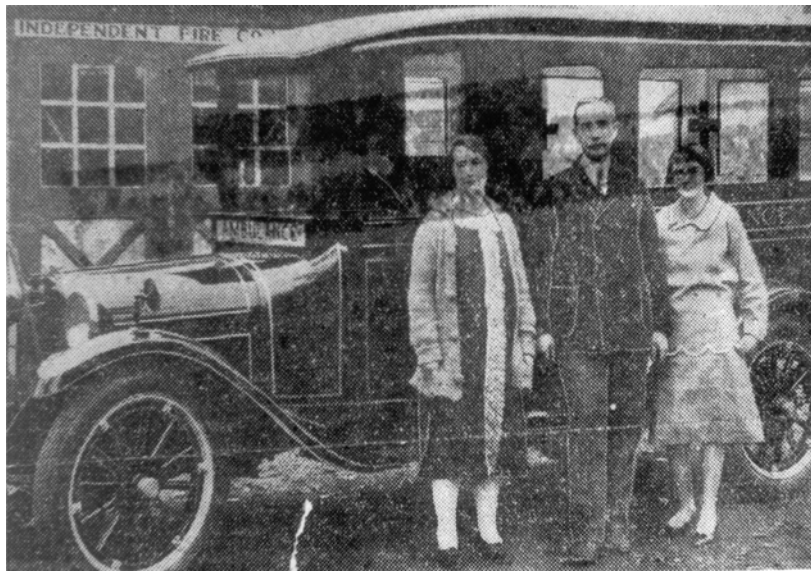


The Maple Shade Fire Department

It began in the late 1800s and was incorporated in 1912.



The first fire house was on South Poplar Avenue.



First Ambulance





LEE
photos

MAPLE SHADE N.J. 1967



Spring Hill Apartments, Route 73



Lions Club, North Lippincott Avenue. Remember the used furniture for sale in the back?



Maple Shade Jaycee Hall, was at the end of Stiles Avenue



Gazebo Park clock made and donated by Robert R. Ries in 1994



Nearest stores- Ben Franklin 5 & 10, Sun Ray Drugs, Main Hardware, Little Joe's Pizza



The old Ben Franklin Five and Ten on Main Street in 2003

